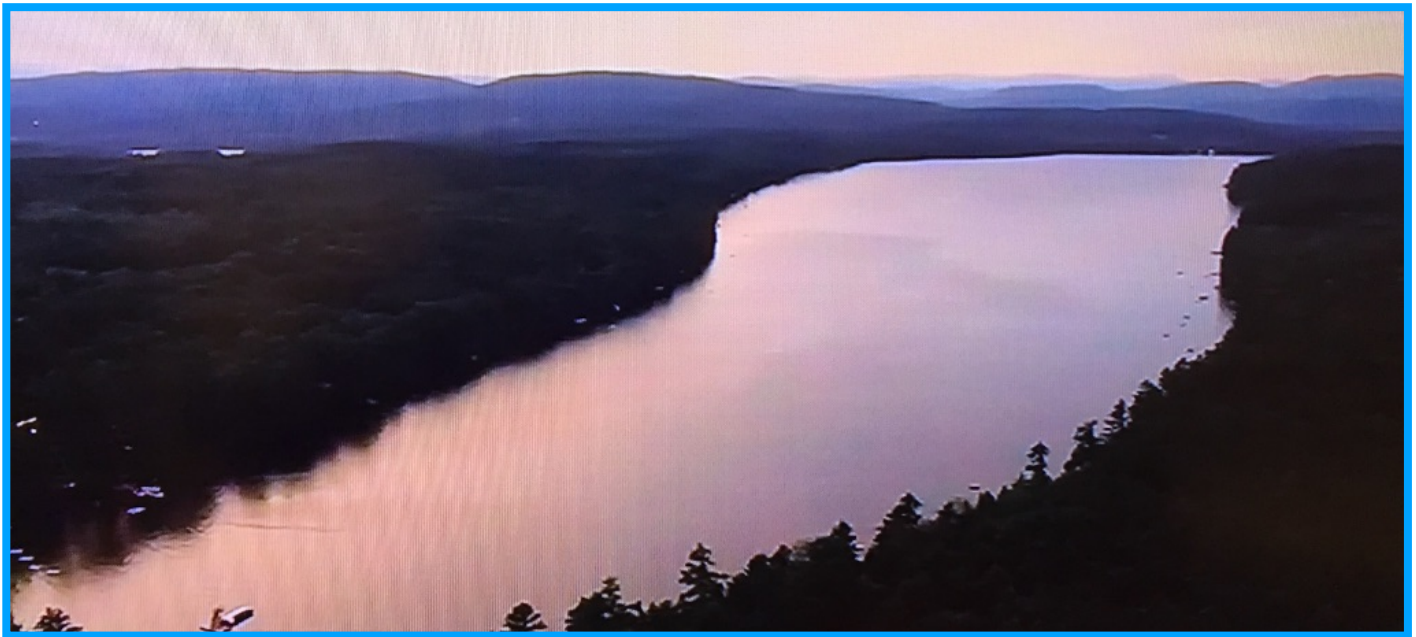


McWain Pond News



MPA ANNUAL MEETING JULY 13, 2019

10:00AM

Birch Rock Camp

The Trustees cordially invite
you to come
early for meet and greet and
to share some snacks provided
by Birch Rock Camp.

Trustee meeting at 8:00 AM.

Summary of the 2018 McWain Pond Association Meeting Minutes:

Colin Holme from LEA explained the mapping of the pond to be done during the summer. (The report from Bruce Whichard is included in this newsletter.) Colin thanked the McWain Pond Association for its support and encouraged individuals to join the LEA. Only about 23% of pond owners are currently members of LEA. We all benefit by their constant pond monitoring. Membership dues help to fund this monitoring.

Nancy Hanger gave her 2018 loon report: First loon arrived 4/23 before ice out. The second one appeared 2 days later. The platform was placed on 5/3 and two eggs were laid on 6/2. One egg was destroyed by a Raven and the surviving chick was born 6/29.

There was a concern about wake caused by larger boats. New markers would be placed to solve the problem.

McWain Pond Trustees

2019

Rich Deering

Jim Kearney

Earl Morse

2020

Tony Butterall-President

Bob Crocker

Peter Leslie

Gary Smith

2021

Donna Butterall-Secretary

Bill Cook-Vice President

Peg Nation

Peter Sevcik

Chris Tomaino

Tom Tremblay-Treasurer

Bruce Whichard

WE NEED SOME ROCKS! WHAT COULD BE BETTER THAN A CAMP FIRE? NOT MUCH! By: Tom Tremblay



When we bought our piece of heaven on McWain Pond, one of the first things we did was take the wheelbarrow up the road and scoured the woods for some big rocks, those we could lift or otherwise finesse into the wheelbarrow. These precious rocks were used to build a safe ring for our campfire.

Sometimes we have the campfire going from early morning to early morning, like 2AM, the next day. Stories are told and retold, songs are sung, beverages are consumed, bodies are warmed, and a plethora of marshmallows are consumed along with chocolate bars and graham crackers. And our clothes...that telltale smell that says, somebody was enjoying a campfire.

I say it all the time..."watching a campfire is more entertaining than most of what is on the television". The very rocks we found have been center stage at our campfires for 18 years. We moved them five times over a period of three summers to get them in the perfect spot. Here is hoping the Summer of 2019 brings you and your family many hours of enjoyment at the campfire. If you don't have a safe place setup....GO FIND SOME ROCKS!

MEMBERSHIP IN THE McWAIN POND ASSOCIATION

The MPA's purpose is to promote the protection and enhancement of the water quality of McWain Pond and to preserve its ecological, economic, recreational and aesthetic value. The MPA works with members and other interested parties to monitor water quality, promote responsible land use practices and more with an interest in preserving property values and enhance the quality of enjoyment.

It is once again time to pay your very affordable, but very important to the MPA's purpose, annual dues for the ensuing year.

At just \$25 per year for a family, individual or business, it makes a good investment in the future of McWain Pond. The Board of Trustees are watching out for your interests and those of our entire McWain Pond community.

Come to the Annual Meeting and get acquainted with friends around the pond and find out how the association can serve you.

Be sure to visit the McWain Pond Website to learn the history of the Pond and to read back issues of Newsletters available on the site.
www.McWainPond.org.

**Please, Be a
Member of
the MPA!**

***Send information,
stories, photos and
creative writing to:***

Gail Tremblay

PO Box 235

***Lincoln, NH 03251
gigitrem@yahoo.com***

**Please be sure to mail your dues
payment to MPA at
PO Box 271,
Waterford, ME 04088**

2018 Water Quality Summary from LEA

Clarity, chlorophyll, and phosphorus are the primary metrics used for water quality assessment on lakes. Trend analysis indicates that clarity is stable over time on McWain Pond. Both surface- layer phosphorus and chlorophyll trends show improvement over time. Average values for all three parameters in 2018 were improved over long-term averages. The surface-layer phosphorus average was one of the lowest of all the lakes sampled in 2018. All three parameters were within the moderate range.

The main water quality concerns on McWain Pond are oxygen depletion, high deep-water phosphorus concentrations, and elevated levels of *Gloeotrichia echinulata*, a cyanobacterial species that causes blooms and can produce toxins. Oxygen depletion at the bottom of the pond can trigger sediments to release phosphorus, which can then be re-suspended in the water column, leading to higher concentrations. Phosphorus and dissolved oxygen data from late August sampling can be seen in the graph below. **McWain Pond is currently in LEA's MODERATE/HIGH degree of concern category.**

For more in depth information please go to the LEA Website: www.Mainelakes.org.

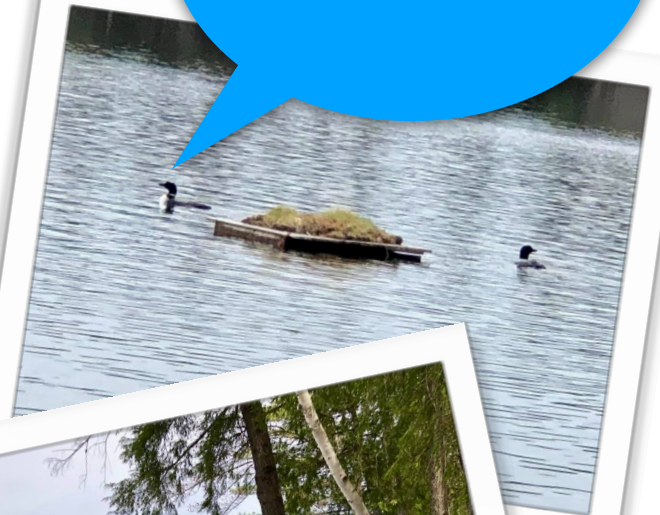
Ice Out Nest In 2019

A late ice out on **April 30th** gave us hope that the Loons would find their way back to the pond and they arrived very soon after the Pond was clear as reported by Nancy Hanger. The Loons were content to watch and wait until

Nancy and Bill's daughter Lisa and Son-in-law Scott could don their wet suits and, under Nancy's direction, place the nesting platform that the Hangers have lovingly placed for 15 years. Two hours later the Loons found their nest!. A nice Mother's Day celebration for Nancy!

Thank you Lisa and Scott for helping to continue your family tradition of helping to keep the loon population thriving.

Please practice safe boating and steer clear of us and our babies. Enjoy the Summer! I know we will.



The quintessential summer holiday, The 4th of July, is just a short time from now. One McWain Pond tradition is the boat parade.

If you are looking for family activities for this **4th of July**, add some of these events:

8:00am. Wilkins House breakfast

11:00am. Waterford town parade

4:00pm. Annual Boat Parade

(all boats to line up off the Point at Cottages at McWain Point. Join in and follow along or wave from the shoreline.)



Join in the 4th celebration and McWain Pond's tribute to America. Join the boat parade, jump in your boat, cheer from the raft, from the shore, for your paddle board. Shout loud for our Country!

FIREWORKS OVER MCWAIN

Again this year Bruce Whichard has engaged **Matt G. Pyrotechnics** as a sponsor and the technical/safety advisor for the beautiful Fireworks display over McWain Pond. Bruce thanks all those who have donated to provide this display each year. Please contact Bruce for more details: whichardbc@comcast.net

Bruce Whichard, his wife Arlene and their son Jared work with The Honor Flight Maine non profit organization, helping to transport Veterans to Washington DC to experience their Memorials. A portion of the donations for fireworks go toward these flights that are free to the veterans.



9:15 PM
Fireworks display on
the Pond to celebrate
July 4th and to honor
our Veterans!

A Little History of the Mapping of McWain from Bruce Whichard

The first biological survey of Long Pond was most likely conducted around 1938. This survey was a small part of a larger statewide effort to survey lakes and ponds in the Sebago Lake and Saco River Watersheds. The scientists collected data to assist fisheries management, and in the process a depth map of many lakes was part of the outcome of this study. This depth map of the late 1930's was updated again in the mid 1950's by Emile Muzik, and a few other men, who were the original founders of the Lake McWain Association, back in the mid 1960's.

Jump forward 58 years, to June 2018, Jared Whichard teams up with LEA intern Jake Moulton, to once again, graph the bottom of McWain Pond. Jared wants to update the 1950's depth chart that his Great Grandfather, Emile Muzik, updated about 70 years ago.

Today there is a much easier, and more accurate way to get the results than Jared's Great Grandfather used, which was a weighted, measured line. Jared and Jake headed out onto the pond in a boat. A GPS data recording echo sonar system was used, with the transducer attached to the hull of the boat. Four separate boats were used depending on the locations of the readings. A canoe was used in the northern end of the lake, where there are large rocks and it gets very shallow. The Birch Rock Camp Safety Boat was used for a good portion of the open, deeper water, along with Arlene's red boat, on those bright sunny days. We put the cover up to get out of the sun. A small "fishing" boat was also used to do the perimeter of the lake, getting in as close to shore as safely possible. With the GPS sonar, a reading is taken every second, that location is recorded, via GPS satellite tracking, all data is stored in the unit, then later downloaded into a computer program which plots thousands of "pings". Once this data is downloaded, we can see a 3 dimensional image of our lake, from any perspective we choose.

The closer (tighter) the grid pattern the boat travels, the more accurate the final outcome. So, if you were looking out on the lake the beginning of last June, you would have seen Jared and Jake going back and forth east to west, then north to south. The data collection took four days of boating, about 6 hours per day. Total mileage covered was slightly more than 120 miles, in those 24 hours "at sea".

This data today provides the foundation for very detailed depth maps, often called bathymetric or hydrographic chart. The LEA is very interested in the results, combining this new data with water temperature, oxygen, and clarity yields:

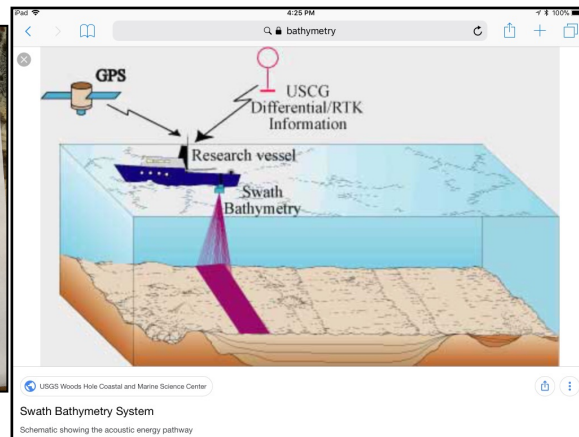
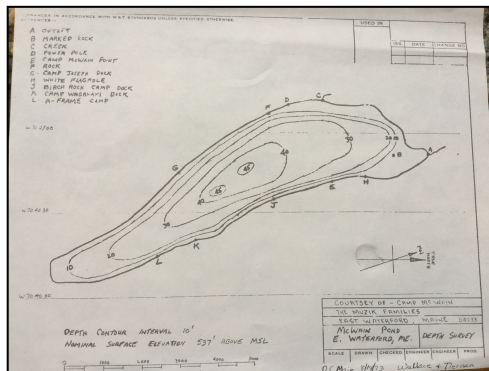
- Volume of lake water below specific dissolved oxygen thresholds
- Area of lake bottom exposed to low-oxygen water
- Mass of phosphorus released to lake water from sediments
- Estimates of suitable fish habitat based on temperature and oxygen preferences
- Estimates of plant habitat and optimal survey locations based on depth of available light.

The LEA is still in the process of mapping every lake where they perform water testing and other surveys. The mapping process started in 2017, continued through the summer of 2018, and there is still more to do this year.

Even though we are told the deepest spot in our lake is 45 feet deep, Jared and his Great Grandfather, Emile Muzik both have said, there is one hole out there that is 47 feet deep. The bottom of the lake in the deepest spots is silt, in places over one foot thick.

The McWain Pond Association, and the LEA would like to THANK Jared Whichard, for following in his Great Grandfather's foot steps, in being an exceptional steward of our lake. Every year Jared has been putting many hours of volunteer work into the lake, be it Charting the Depths, swimming the perimeters a few times doing plant sampling with the LEA and Earl Morse, assisting with soil runoff and erosion control, and helping people with their boats and docks.

Below is a map from Bruce Whichard's grandfather and others prepared in the 1950 's and other mapping graphics. Today we use a Bathymetry System, using GPS and sonar. Once the mapping is completed, the results can then be super-imposed upon a google map.



Jared at the helm, Jake, the LEA intern, at the sonar, and Arlene going along for a ride to see how the mapping is accomplished. We used three different boats, depending on the location of the pond, and what submerged objects we might bump into, or hopefully avoid, bumping into.



Jared Whichard in the stern, Jake, the LEA intern in the bow, mapping the large rock and other shallow areas on the north end of the lake was accomplished by the use of a canoe.



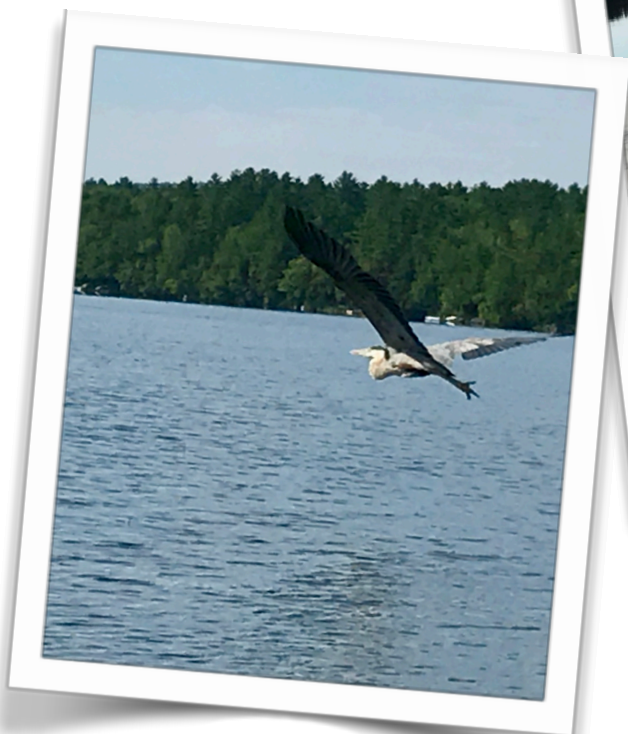
McWain Musings

by Gail Tremblay

A Few years ago Tom and I had the opportunity to go with my daughter and her family to a SWOAM Field Day in Vassalboro, Maine where we visited a Heron Rookery. We learned a little bit about the Herons and their habits and habitats.

Since that time I've been in awe every time I see the beautiful Great Blue Herons flying above us while we are enjoying quiet moments on our beach. What a beautiful sight as they float across the sky. Sometimes two are following close behind each other to reach their high perch. Other times we have enjoyed playing a game of "who spots it first", while kayaking around the Pond. The allusive bird quietly glides to a distant tree and stands ever so still camouflaged against the branches while we scan slowly to spot it first. Every year we have seen them and this year I finally captured some special pictures.

And then on a visit with neighbors I was shown the remains of one of these beautiful herons on the shoreline. No one had seen what happened. Only found feathers fluttering near the waters's edge and an Eagle taking flight! Nature takes its toll, time moves on! We lose friends we were just getting to know... Cherish the moments and the memories!



Sound Travels Over Water



by Bruce Whichard

As a child growing up, my parents always told me, “sound travels over the water”. THAT IS TRUE! One late August night, about 8:00pm, we heard a new sound resonating out on Lake McWain. It was not the cry of a loon, it was not the hum of a motorboat, it was not the laughter of campers enjoying a fire at the lake. But it sounded as a brass horn trumpeting out TAPS, traveling across the lake, echoing off the mountains.

By the time we made it down to the lake’s edge to investigate where this beautiful and tranquil rendition of TAPS was coming from, the final notes were played. This left our investigation on going. We talked to our neighbors, who also heard TAPS the night before. We talked with fishermen who were out on the lake, who were also thrilled to hear TAPS. Word traveled quickly around Lake McWain, neighbors talking to neighbors, everyone enjoying the mysterious playing of TAPS. How honoring to our great Veterans, how beautiful the sound rolling down the lake, bouncing off the

trees, echoing through the mountains.

But what was the source of this mystical and reverent playing of TAPS? We all now came to lake’s edge slightly before 8:00pm, to stand at attention, to remove our hats, to salute, and to remember our Veterans, and loved ones who are not with us anymore, as TAPS serenaded Lake McWain.

Our investigation finally came to a close, when we discovered that Tom Lentz, Stephanie’s son, Pam William’s grandson, who is also a Marine veteran, was the source of Lake McWain’s enjoyment of TAPS. Tom was playing his trumpet, not only because his grandfather Loyd had asked him to play, but Tom was Honoring his friends and fellow Marines.

Little did Tom realize, the positive effect his lone respectful trumpeting had on the hearts, minds and souls of so many individuals who were fortunate enough to hear him play. Nor, did Tom realize how the “audience” grew nightly, around the shores of Lake McWain, as folks eagerly awaited Tom’s solemn tribute.

Yes, Dad, sound does travel over the water!

WE ALL THANK YOU, TOM!



Mcwain Pond Friends We Will Remember.

William Hanger 1945-2018

Bill first came to McWain Pond in 1958 as a camper at Camp Waganaki. He continued as a camper or counselor until 1966. His parents, Bob and Ellen Hanger, built a summer home on McWain and Bill and Nancy (his wife of 51 years) honeymooned there in 1967. They brought their daughters, Lisa (Fraley) and Jill (Patton), every summer with husbands and grandchildren following suit. In 1995, Bill and Nancy built their own home adjacent to his parents' but made it year-round so that they could retire there. In 1999, Bill retired from Miami University (Ohio) and Waterford became their home.

In his 30+ years at Miami, Bill was Assistant Registrar, Assistant Provost and then Director of Institutional Relations (a fancy name for the liaison to the Ohio Legislature and all governmental relations) When he retired he was invited to the floor of both chambers and allowed to speak...very unusual. He served on City Council, VP of the local NAACP, 18 years on Dayton, Ohio's PBS board, but he loved mentoring students the most.

Bill was active on the Oxford Growth Council; served ten years on the Oxford Hills School Board; cooked a lot of bacon at the community breakfasts; served as Treasurer of the Waterford Historical Society; and served on various boards of the town and the McWain Pond Association.

In 2006, he rescued a loon egg by making a floating nest and that resulted in putting the nest into the cold May water every year and an eventual thirteen loon chicks fledging from our pond. When you hear the call of the loon, think of Bill.

On the evening of September 22, 2018, Friends and family witnessed a very beautiful and powerful SUNSET over Mcwain Pond and it was reported by many across the country!

A Fine Farewell to Bill!



Barbara McKaig Urell 1944-2018

Barb was born in Albany, NY and graduated from SUNY Oneont and then earned a MEd at Miami University (Oxford, OH). She taught fifth and seventh grade, specializing in mathematics.

She was featured on a PBS nationally distributed series on math education. Barb was a terrific teacher and her students loved her as much as she loved them.

Barb first came to McWain Pond in 1979 with her husband Joe and their two sons, Brian and Peter. They stayed at Camp McWain while visiting their friends, Bill and Nancy Hanger. Fast forward to 1997 and the Urells built a house next door to the Hangers. In spite of battling many health challenges, Barb waitressed at the community breakfasts for many years.

She also welcomed many friends and family members to their summer home. Her favorites were her sons, Brian and Peter and her grandchildren – Hannah, Matthew and Elijah. She especially loved sitting on her deck with Joe, her husband of 51 years.

**James Dunn 1952-2019**

Jim's passions in life were his wife, Sue and their family, friends and his dog Molly. Spending time with family was his greatest joy. In his retirement, Jim and Sue enjoyed traveling with friends to Alaska, Ireland and Scotland. He found great Peace and Joy in nature. One of his favorite places was the Frost Pond Camps outside of Baxter State Park. He loved to canoe and kayak and enjoyed the quiet waters of the Saco River. In 2010, Jim and Sue found their camp on McWain Pond. This would grow to become one of Jim's favorite places. The family spent many summer days swimming, boating and hiking the nearby mountains. His preferred place was to ride in the boat up front snuggled with his dog. Fishing the calm waters of the pond in his small boat or kayak brought him many hours of happiness. He enjoyed watching the sunsets from the dock and sitting by the fire listening for the call of the loons with his family.



Marie W Rolfe 1940-2018

Marie W. Rolfe, 78, of Waterford passed away on Tuesday, August 14 at Maine Medical Center. She was born in Lewiston on April 18, 1940 the daughter of Seth and Althea Millett Wilson. She graduated from Norway High School and married Rodney Rolfe on January 10, 1959. She had been a homemaker all of her life as well as working at Fox Ridge, Wilner Wood Products and Bridgton Knitting Mill. She was a fan of stock car racing, enjoyed the ocean, reading, road trips and eating out. She loved her dog "Buddy" and her family was most important to her. She is survived by her husband of 59 years, Rodney of Waterford; her sons, Lynn Rolfe and wife Lisa of Liberty, S.C. and Ricky Rolfe and wife Debbie of Albany; her daughter, Belinda Morel and husband Roland of Greene; 8 grandchildren; and 10 great grandchildren.

They bought their land on McWain Pond in 1978 from Steven Wilson (my mother's brother). They spent every summer there for 21 years until 1999 when they made it their year round residence. "My mom absolutely loved "camp"! She always told us that no matter what happened, she wanted a part of herself to always be at camp. Through her children, grandchildren and great grandchildren, my mom will always be at camp, in our hearts and memories." *Belinda Morel*





Turn Key Homes
OF MAINE

Complete Home Packages
MODULARS • SITE BUILT • LOTS • DECKS COMMERCIAL
PROJECTS • FOUNDATIONS • SITE WORK • GARAGES

698 Main St (Rt 26), Oxford, ME 04270

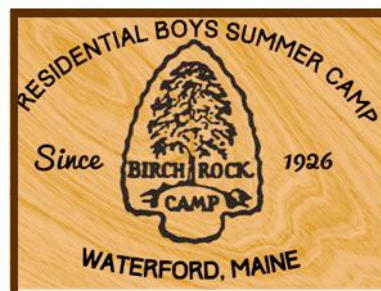
Todd Truman, President • Todd@turnkeyhomesofmaine.com
207-539-6900 • TurnkeyHomesOfMaine.com

Wilson Excavating, Inc. 444 Bisbee Town Rd
(207) 583-4632 Waterford, ME 04088



Complete Residential & Commercial Site Work
For all your excavating needs. Family Business Since 1968

WilsonExcavatingInc.com



Birch Rock Camp

PO Box 48 • Waterford, ME 04088

Birchrock.org

BirchRock@aol.com • 207-741-2930 • 207-583-4478
Richard Deering & Michael Mattson, Directors

*Please support the
companies who
help us enjoy Camp
Life on McWain
Pond*



MOSQUITOSQUAD®

No Bugs, No Bites, No Kidding

FREE Quote: 207-370-8425

McWain Pond Association
C/O Gail Tremblay
PO Box 235
Lincoln, NH 03251